

# 8 Bassingham Road

Approximate Gross Internal Area  
Ground Floor = 58.7 sq m / 632 sq ft  
First Floor = 58.4 sq m / 629 sq ft  
Second Floor = 46.4 sq m / 499 sq ft  
(Excluding Eaves)  
Cellar = 7.2 sq m / 77 sq ft  
Total = 170.7 sq m / 1837 sq ft

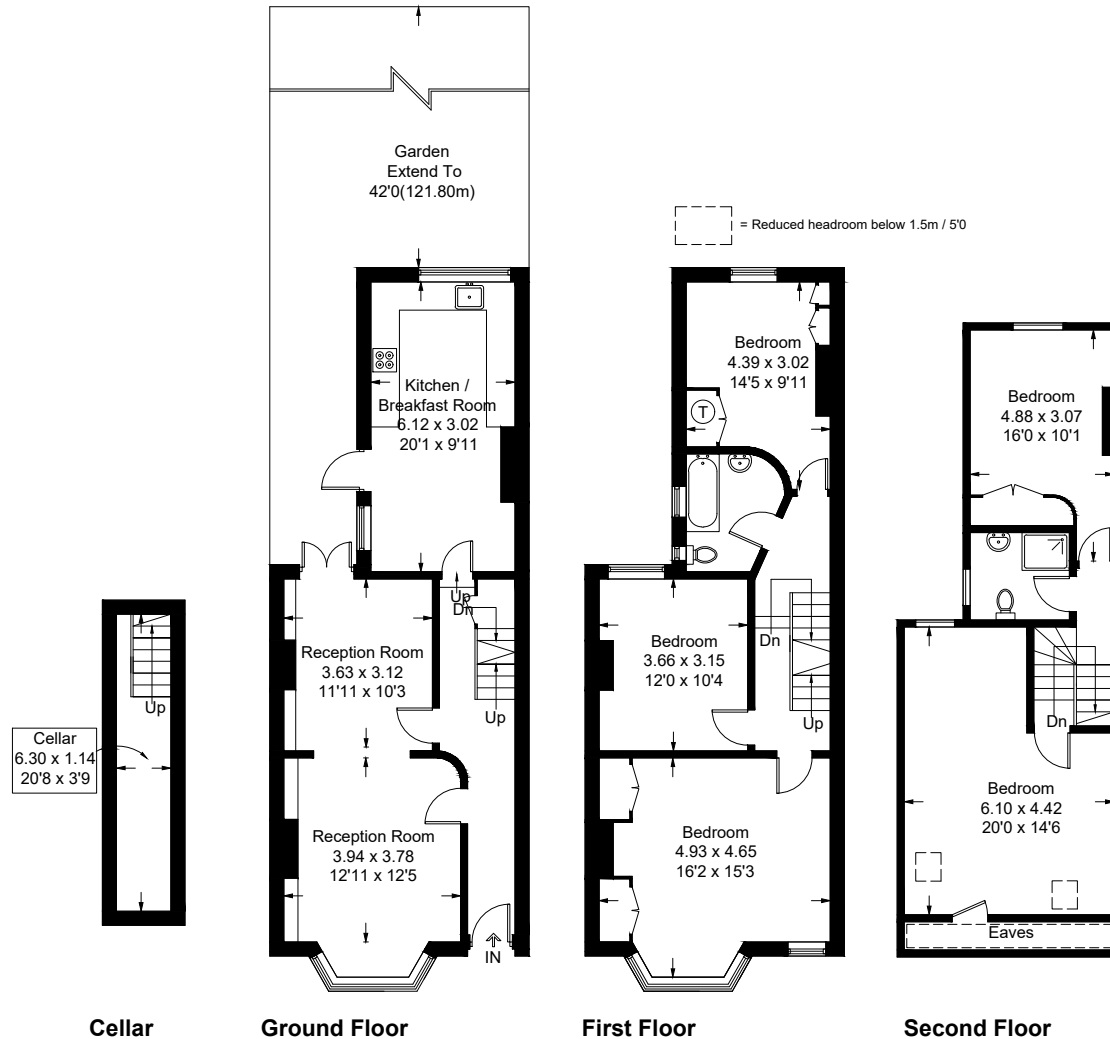


Illustration for identification purposes only, measurements are approximate, not to scale. FloorplansUsketch.com © 2016 (ID284984)