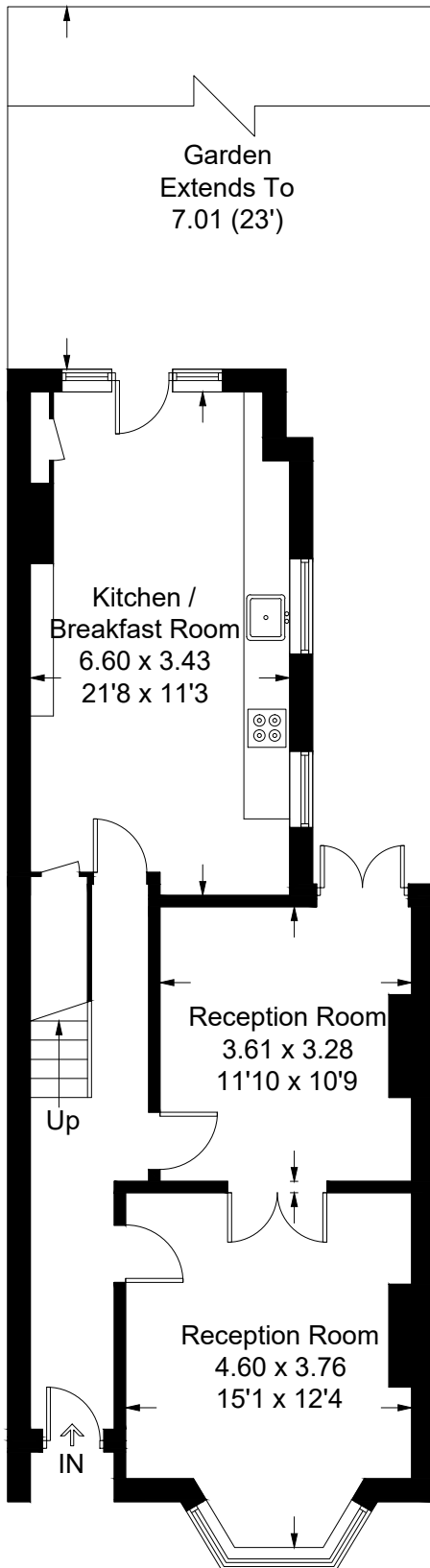
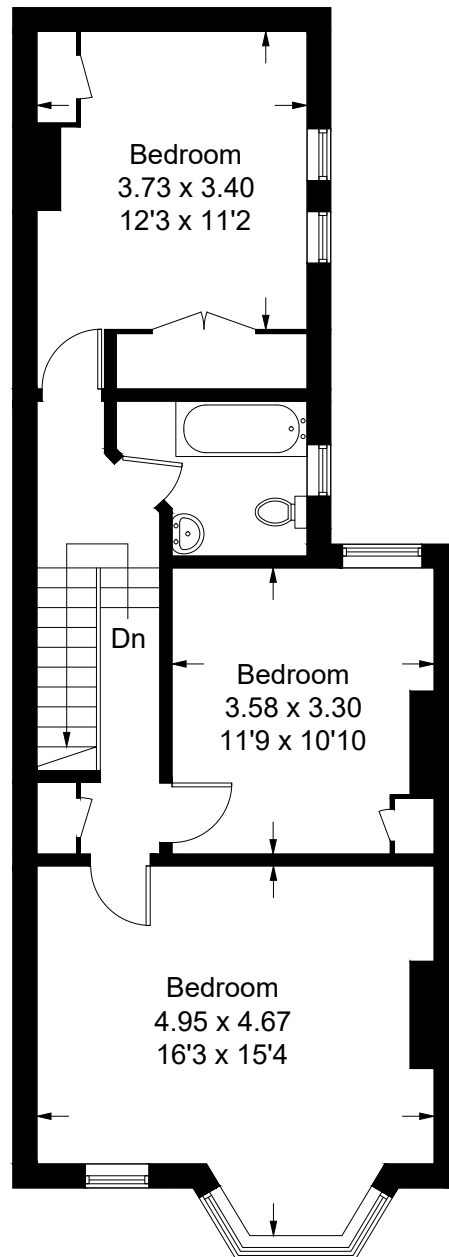


St Ann's Hill

Approximate Gross Internal Area
Ground Floor = 61.3 sq m / 660 sq ft
First Floor = 62 sq m / 667 sq ft
Total = 123.3 sq m / 1327 sq ft



Ground Floor



First Floor

Illustration for identification purposes only, measurements are approximate,
not to scale. FloorplansUsketch.com © 2017 (ID305842)